

S2

FIRE

THE MOST VERSATILE AND RUGGED
FIRE FIGHTING THERMAL
IMAGING CAMERA AVAILABLE TODAY

Our cutting-edge technology brings you the smallest, lightest and rugged fire fighting thermal imaging camera.

Half the size of the original SoloVision, the S2 is our lightest and smallest, long wavelength infrared camera core and still the lightest in the world.

The S2 can be used as a hands-free unit or it can be hung over the neck like a pair of binoculars using the neck strap and is suitable for use with all known breathing apparatus and gas masks. As an all round camera the S2 Fire has the capability to easily monitor for fire/search and rescue of victims, there is no better camera for the job. The S2 will easily identify the beginnings of even a small fire and given the temperatures of the fire base, the S2 Fire will pick up the heat through steel and other metal work. Any glare from a fire can be quickly identified and the fire suppressed. This camera has been designed specifically for close in fire suppression work but also has the same size up and aftermath capabilities of cameras twice it's size.



S2

S2 Fire - Option 1

- On Screen Temperature Display, both graphic and digital
- On Screen Battery Time Remaining
- On Screen Temperature Warnings
- Has White Hot/Black Hot Toggle
- Video Output
- Over 3 Hours Battery Life (With Rechargeable Battery)

S2 PLUS

S2 Fire Plus Standard - Option 2

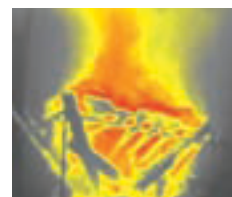
- Same as the "Base" Imager PLUS:
- Menus System To Select Mission Specific Options
- One Second Temperature Sampling Profile storage (10,000 hours)
- Stores Historical and Mission Statistics (8,000 Missions)
- Standard Imager Analyst® software for retrieving and displaying data

S2 PLUS PRO

S2 Fire Plus Pro - Option 3

- Same as the "Base" and "Standard" Imagers PLUS:
- One Second Internal Temperature Sampling Profile
- Colour Map Scroll During a Mission to enhance detail
- Automatic Image Capture (Adjustable 1 to 60 seconds interval)
- Manual Push-Button Image Capture
- Pro Imager Analyst® software for retrieving and displaying data
- Internally Stores 40,000 Images.
- Colour Map creation and customization
- Customized start up screen

Our lightest and smallest, long wavelength infrared camera core



don't go it alone
go with solo

